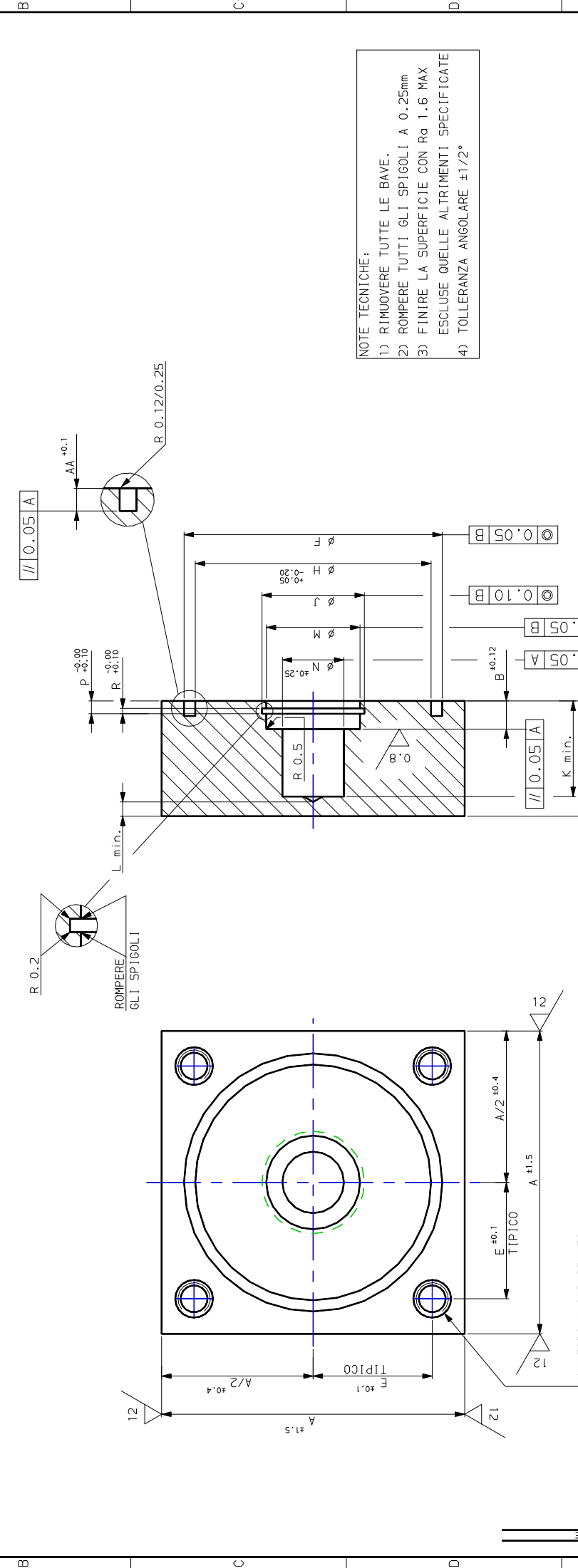


1	2	3	4	5	6	7	8	9													
DIS. NUMERO:	A	B	C	D	E	F	TOLL	G	H	J	TOLL	K	L	M	TOLL	N	P	R	AA	S	T
M1-111T-40	63	6.5	M8x1	59	20.85	44.5	-0.00 +0.04	38	39.6	21.9	-0.00 +0.08	31.5	6.5	20.6	-0.00 +0.20	12.50	2.5	1.20	3.5	8.5	25
M1-111T-50	75	6.5	M12x1.25	74	26.15	56.0	-0.00 +0.05	38	49.6	21.9	-0.00 +0.08	31.5	6.5	20.6	-0.00 +0.20	12.50	2.5	1.20	3.5	13.0	18
M1-111T-63	90	7.0	M12x1.25	91	32.20	70.0	-0.00 +0.05	38	62.6	32.0	-0.00 +0.10	31.5	6.5	30.2	-0.00 +0.20	18.50	3.0	1.40	3.5	13.0	18
M1-111T-80	115	8.0	M16x1.5	117	41.35	89.5	-0.00 +0.05	45	79.6	43.8	-0.00 +0.15	35.5	8.0	41.3	-0.00 +0.25	25.00	3.5	1.70	4.0	17.0	19
M1-111T-100	130	8.0	M16x1.5	137	48.50	109.0	-0.00 +0.05	45	99.6	43.8	-0.00 +0.15	35.5	8.0	41.3	-0.00 +0.25	25.00	3.5	1.70	4.0	17.0	19
M1-111T-125	165	8.5	M22x1.5	178	62.90	135.0	-0.00 +0.05	58	124.6	57.2	-0.00 +0.15	35.5	10.0	54.0	-0.00 +0.30	35.00	4.0	2.20	4.0	23.0	22
M1-111T-160	205	11.5	M27x2	219	77.40	168.8	-0.00 +0.05	58	159.6	77.5	-0.00 +0.15	40.0	12.0	73.0	-0.00 +0.30	48.00	5.5	2.70	4.0	29.0	14
M1-111T-200	245	11.5	M30x2	269	95.10	214.0	-0.00 +0.05	76	199.6	77.5	-0.00 +0.15	53.0	13.0	73.0	-0.00 +0.30	48.00	5.5	2.70	4.0	32.0	28



NOTE TECNICHE:

- 1) RIMUOVERE TUTTE LE BAVE.
- 2) ROMPERE TUTTI GLI SPIGOLI A 0.25mm
- 3) FINIRE LA SUPERFICIE CON Ra 1.6 MAX ESCLUSE QUELLE ALTRIMENTI SPECIFICATE
- 4) TOLLERANZA ANGOLARE $\pm 1/2^\circ$

DENOMINAZIONE DESCRIPTION
FONDELLO C-IL INDRO SERIE IHM CONF. ISO 6020/2

MATERIALE-MATERIAL
 FE 360 B UNI 10233/3 *
 TRAFILATO

TRATTAMENTI TERMICI-HEAT TREATMENTS
 DIS. - DNG.

DATA DATE
 18-12-98

PRODOTTORE MANUFACTURER
 Porter I

REVISIONI
 DATA DESCRIZIONE E FIRME

SCALE
 NO

INDICAZIONE INDICATION
 A2

FORMA
 M1-111T-X

SENSITIVE THERMIC PAPER // CARTA TERMOSENSIBILE